

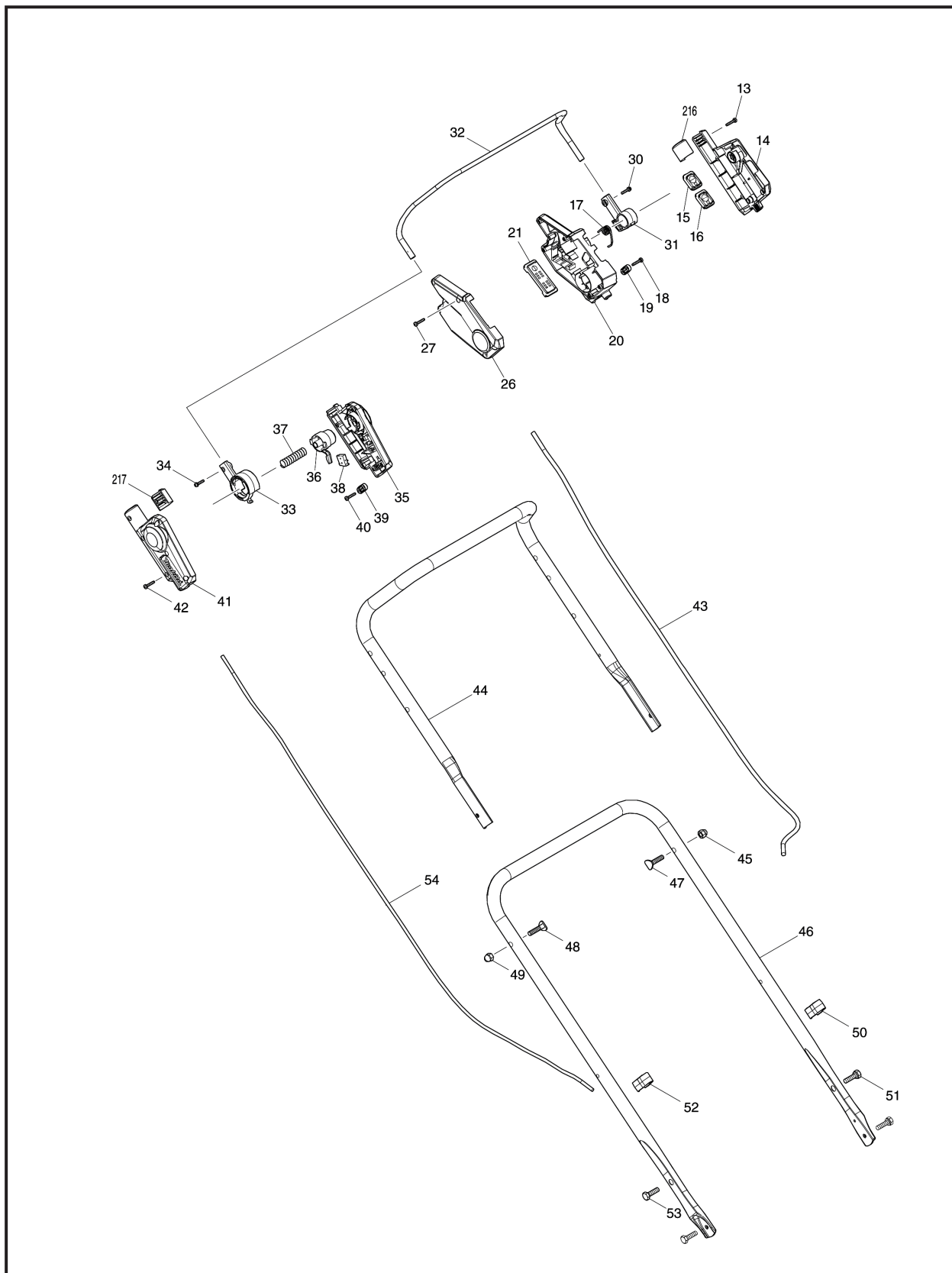


牧田®
专业电动工具

型号 DLM530

充电式草坪修剪机

18V



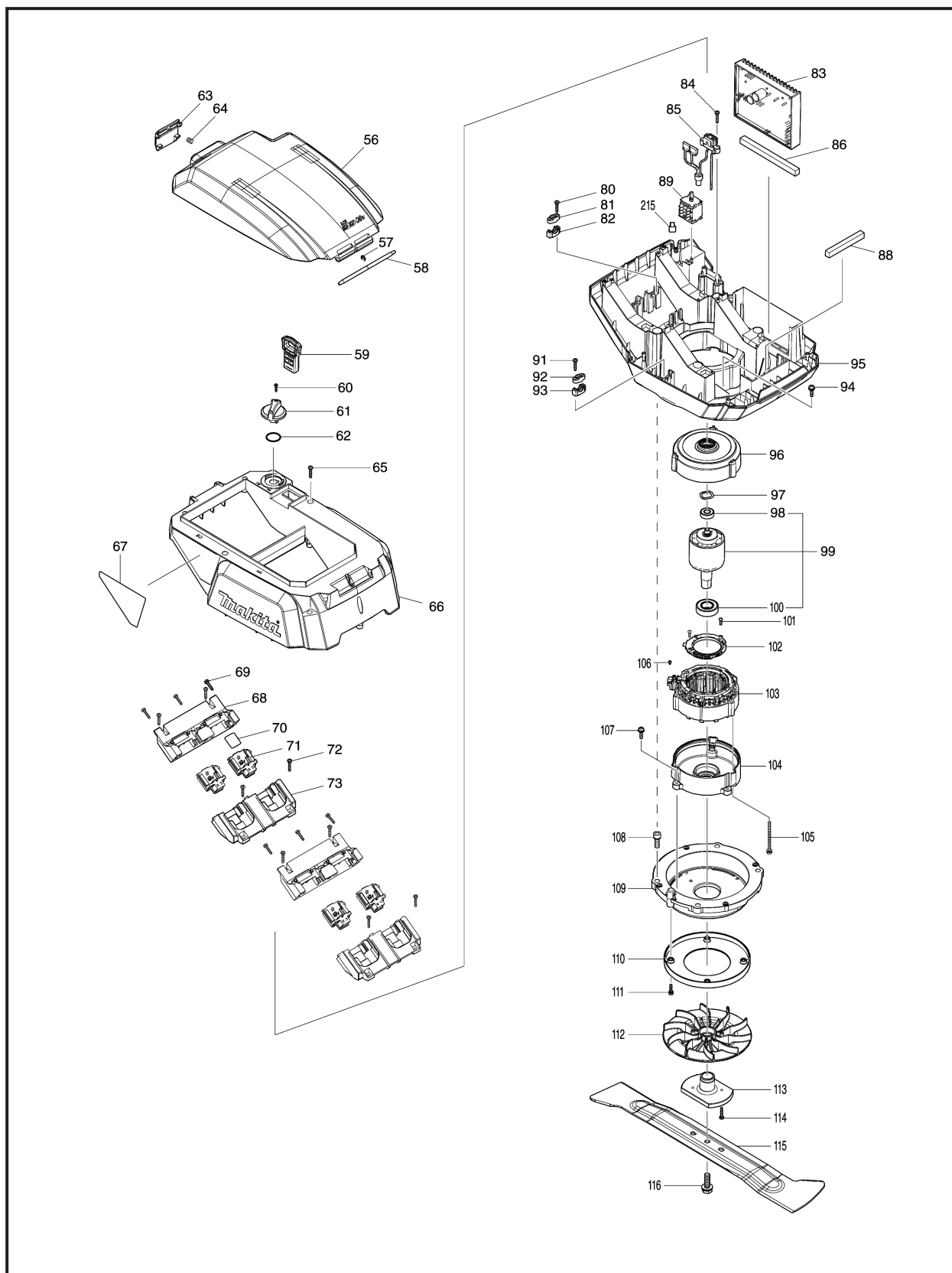


牧田®
专业电动工具

型号 DLM530

充电式草坪修剪机

18V



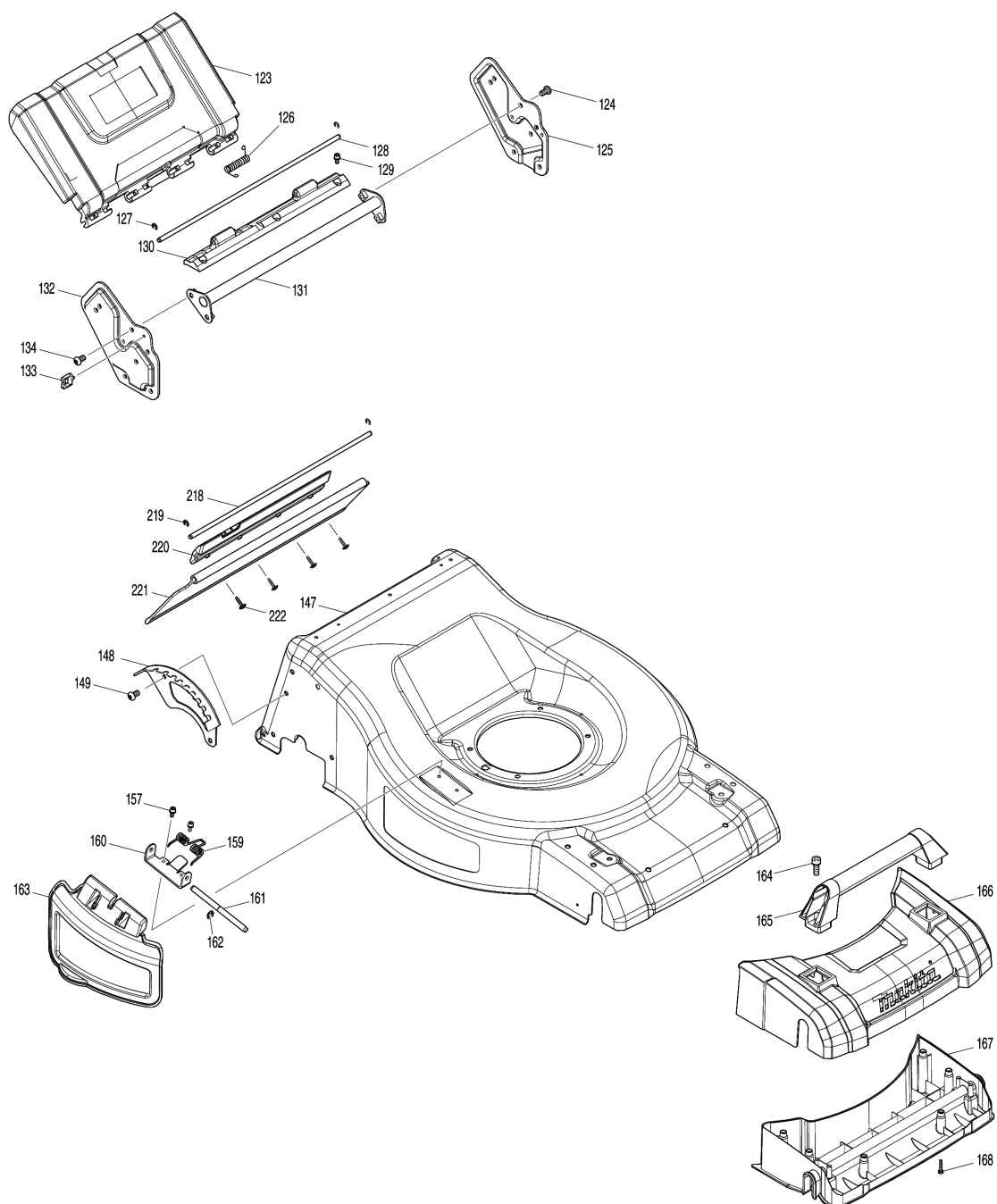


牧田®
专业电动工具

型号 DLM530

充电式草坪修剪机

18V





充电式草坪修剪机

This technical diagram illustrates the assembly of a Trakka utility vehicle, showing the chassis, suspension, wheels, and body components. The parts are numbered as follows:

- Chassis and Suspension:** 135 (Coil spring), 136 (Shock absorber), 137 (Pin), 138 (Pin), 139 (Pin), 140 (Pin), 141 (Pin), 142 (Pin), 150 (Bracket), 151 (Bracket), 183 (Frame), 184 (Bracket), 185 (Bracket), 186 (Bracket), 188 (Bracket), 189 (Bracket), 190 (Bracket), 207 (Frame), 208 (Bracket), 212 (Bracket), 213 (Bracket).
- Wheels and Tires:** 171 (Tire), 172 (Tire), 179 (Wheel), 180 (Wheel), 181 (Wheel), 195 (Tire), 196 (Tire), 197 (Tire), 198 (Tire), 203 (Tire), 204 (Tire), 205 (Tire), 206 (Tire), 209 (Tire), 210 (Tire), 211 (Tire).
- Body and Miscellaneous:** 55 (Body), 117 (Body), 118 (Bracket), 119 (Bracket), 120 (Bracket), 121 (Bracket).